

Review

The Common and Distinct Features of Brown and Beige Adipocytes

Kenji Ikeda,^{1,2,3} Pema Maretich,^{1,2,3} and Shingo Kajimura^{1,2,3,*}

Two types of thermogenic fat cells, brown adipocytes and beige adipocytes, play a key role in the regulation of systemic energy homeostasis in mammals. Both brown fat and beige fat possess thermogenic properties in addition to common morphological and biochemical characteristics, including multilocular lipid droplets and cristae-dense mitochondria. Recent studies also identify features that are distinct between the two types of thermogenic fat cells, such as their developmental regulation and function. Of particular interest is the role of beige fat in the regulation of glucose homeostasis via uncoupling protein 1 (UCP1)-independent mechanisms. A better understanding of the underlying causes of these characteristics of brown and beige fat will allow us to specifically manipulate these cells to improve systemic energy metabolism and glucose homeostasis.

Adipose tissue is a dynamic organ which can range from 4% to >40% of total body composition in adult humans. Fat is often noted for its energy-storing function, as in white adipose tissue (WAT); however, mammals also possess brown adipose tissue (BAT) that plays a crucial role in whole-body energy homeostasis through non-shivering thermogenesis. Emerging evidence suggests that mammals possess at least two types of thermogenic adipocytes: classical brown adipocytes and beige adipocytes. In rodents and infants, classical brown adipocytes (or brown fat) are located in the dedicated BAT depots, such as the interscapular regions and around the kidney (perirenal BAT) (Figure 1). By contrast, beige adipocytes (also called brite adipocytes) are an inducible form of thermogenic adipocytes that sporadically reside within WAT depots. Similarly to brown adipocytes, beige adipocytes also possess abundant cristae-dense mitochondria that express UCP1 and multilocular lipid droplets [1]. However, beige adipocyte biogenesis in WAT is strongly induced in response to some environmental conditions and external cues, including chronic cold acclimation, exercise, long-term treatment with peroxisome proliferator-activated receptor γ (PPAR γ) agonists or β 3-adrenergic receptor (AR) agonists, cancer cachexia, and tissue injury. This phenomenon is often referred to as the 'browning' or 'beigeing' of white fat (Figure 1). While the browning of white fat following cold acclimation was described over 30 years ago [2,3], recent studies have dissected the molecular regulators and developmental lineages of this browning process [4,5].

Beige fat has recently caught mainstream attention for two reasons. This first is that its developmental processes serve as a unique model to better understand how environmental factors control cell fate specification and maintenance. The second reason lies in its relevance to adult humans and its promise as a new therapeutic target in the treatment of obesity and other metabolic disorders. Since the discovery of the brown adipose organ in adult humans [6–10], the prevalence of beige adipocytes in adult humans has been a topic of major debate. Transcriptional analyses in adult human BAT depots demonstrated that adult human BAT

Highlights

Two types of thermogenic fat (brown adipocytes and beige adipocytes) are present in humans and rodents.

Brown and beige fat possess both common and distinct characteristics that include their developmental regulation and function.

Non-canonical (UCP1-independent) thermogenic mechanisms control systemic energy metabolism and glucose homeostasis.

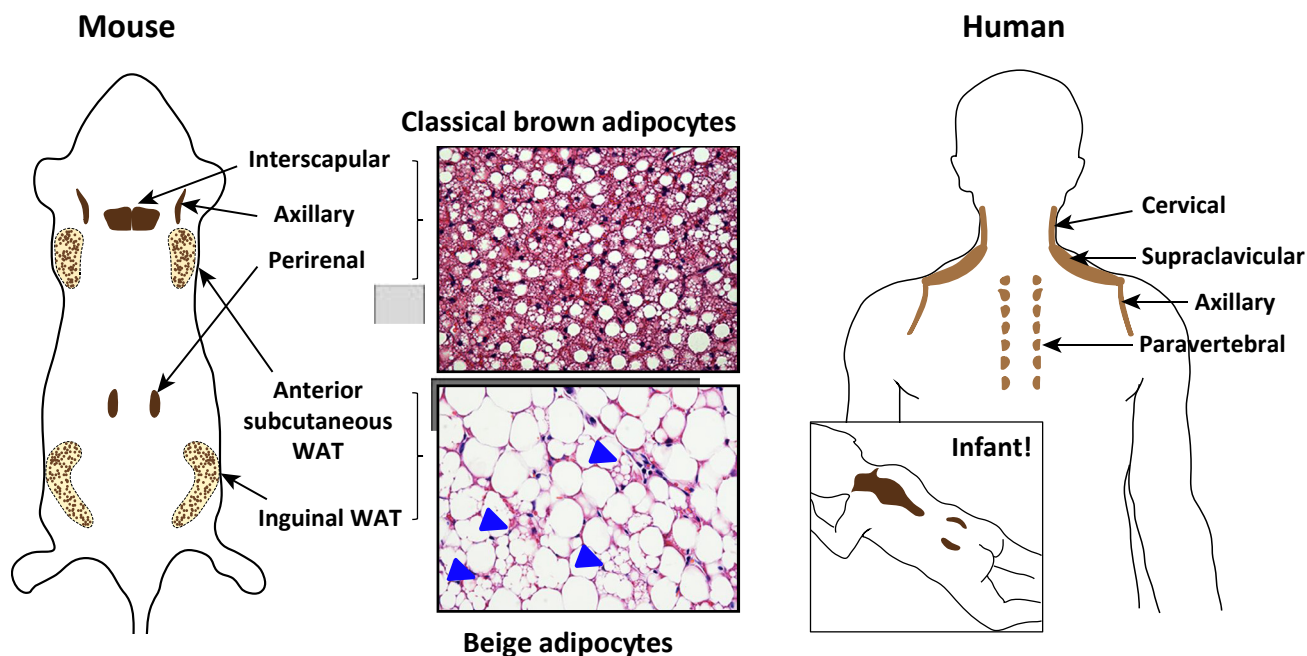
Non-canonical thermogenesis by SEARCA2b-mediated Ca^{2+} cycling is an evolutionarily conserved mechanism that is active even in animals that lack a functional UCP1 protein.

¹University of California San Francisco (UCSF) Diabetes Center, San Francisco, CA 94143, USA

²Eli and Edythe Broad Center for Regeneration Medicine and Stem Cell Research, San Francisco, CA 94131, USA

³Department of Cell and Tissue Biology, UCSF, San Francisco, CA 94143, USA

*Correspondence: shingo.kajimura@ucsf.edu (S. Kajimura).



Trends in Endocrinology & Metabolism

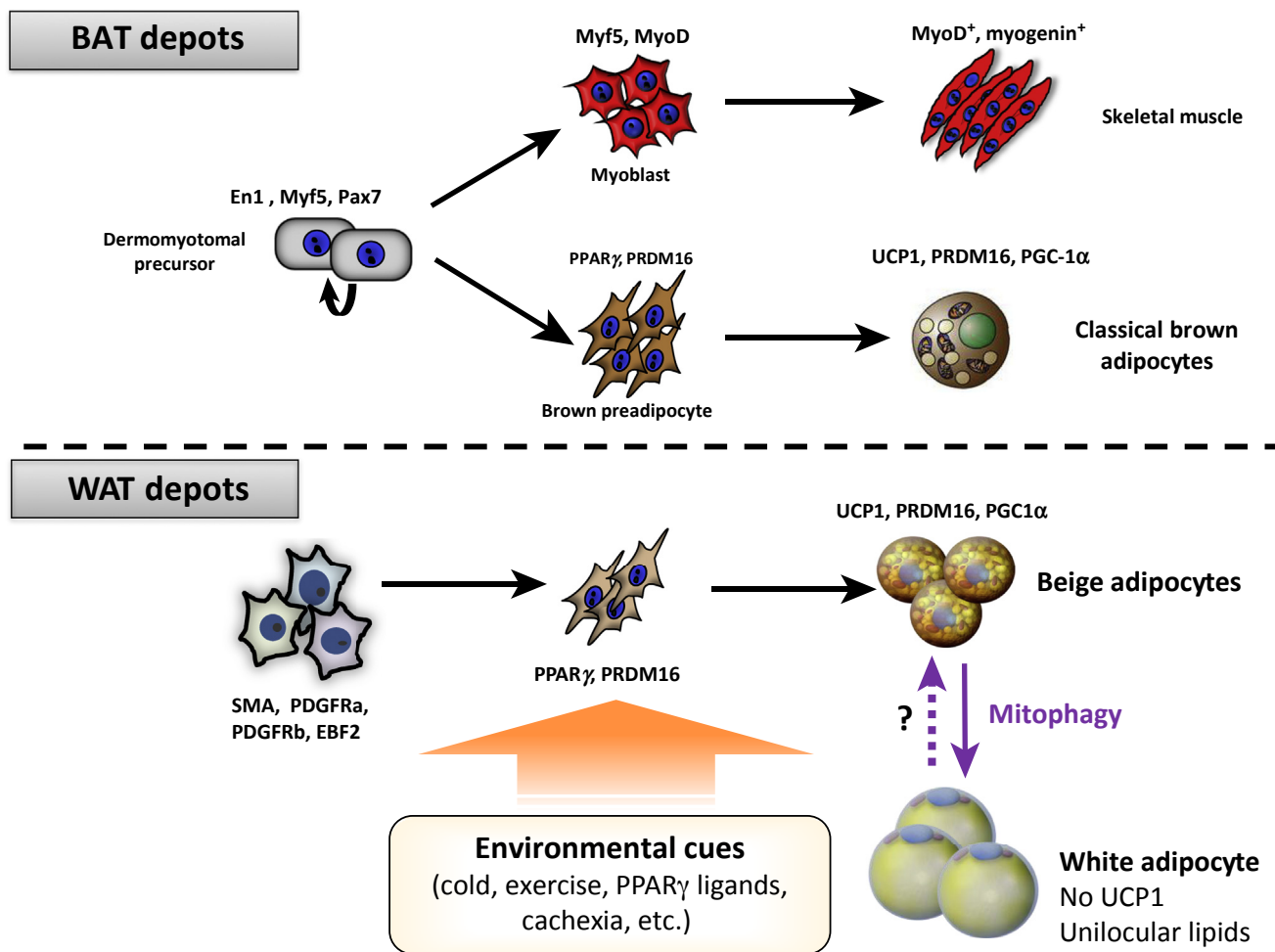
Figure 1. Anatomical Locations of Thermogenic Fat in Mice and Humans. Classical brown adipocytes reside in dedicated brown adipose tissue (BAT) depots, including interscapular, axillary, and perirenal BAT depots in mice and infants. Beige adipocytes sporadically reside in subcutaneous white adipose tissue (WAT) depots, such as the inguinal and anterior subcutaneous WAT in mice (arrowheads indicate the multilocular beige adipocytes). In adult humans, BAT is present in multiple locations, including cervical, supraclavicular, axillary, paravertebral, and abdominal subcutaneous regions. UCP1-positive adipocytes from the supraclavicular region show a molecular signature resembling that of mouse beige adipocytes, whereas the deep neck regions contain thermogenic fat that resembles classical brown adipocytes in mice.

expresses molecular markers selective to beige adipocytes in mice [11–13], while the deep neck regions contain thermogenic fat that resembles classical brown fat in mice [14]. Notably, the isolation and characterization of clonally derived beige-like adipocytes from adult humans has provided definitive evidence that beige adipocytes exist in humans [15]. Moreover, chronic cold acclimation promotes the recruitment of new thermogenic fat even in adults who do not possess detectable levels of pre-existing brown fat before cold acclimation, based on glucose uptake assessed by ^{18}F -labeled fluorodeoxyglucose positron emission tomography/computerized tomography (^{18}F -FDG-PET/CT). In parallel with the cold-induced recruitment of new thermogenic adipose tissue, these studies observed a significant increase in non-shivering thermogenesis and/or an improvement in insulin sensitivity [16–19]. A recent study with a refined ^{18}F -FDG-PET/CT imaging further identified a much wider distribution of ^{18}F -FDG PET-positive adipocytes than was previously estimated (six locations, including abdominal subcutaneous regions) in adult humans [20]. Together, these results suggest that adult humans also possess inducible beige-like thermogenic adipocytes that significantly contribute to the regulation of systemic energy homeostasis.

While brown adipocytes and beige adipocytes share many morphological and biochemical characteristics, recent studies suggest discrete characteristics between the two cell types. This review aims to discuss the unique features of each subset of thermogenic adipocytes and their biological significance in the regulation of whole-body energy homeostasis.

Developmental Timing and Lineages of Two Types of Thermogenic Adipocyte

Embryonic BAT development precedes WAT formation during embryogenesis. From the viewpoint of thermogenesis, this is compatible with our understanding of a primary function of BAT in non-shivering thermogenesis following birth, given that newborns need to maintain their body temperature by non-shivering thermogenesis [21]. Lineage-tracing studies demonstrated that classical brown adipocytes in the dedicated BAT depots originate from a sub-population of dermomyotomes marked by the expression of specific transcription factors, including *Pax7*, engrailed 1 (*En1*), and *Myf5* [22–25], and that the somite versus brown preadipocyte divergence occurs at embryonic day (E) 9.5–11.5 in mouse embryos [23] (Figure 2, upper panel). Early B cell factor 2 (EBF2) is expressed in brown adipocyte precursors that are distinct from the somite population expressing *MyoD*, downstream of *Myf5*, within the mouse embryonic somites at E12.5 [26], while *MyoD*-expressing somites do not give rise to



Trends in Endocrinology & Metabolism

Figure 2. Developmental Lineages of Thermogenic Adipocytes. Classical brown adipocytes differentiate during embryonic development from a subset of dermomyotomal precursors that express *En1*, *Myf5*, and *Pax7*. The development of beige adipocytes in subcutaneous WAT depots is stimulated by both environmental and endogenous stimuli, including chronic cold acclimation, exercise, PPAR γ ligands, tissue injury, and cancer cachexia. When the external stimuli are withdrawn, the recruited beige adipocytes directly acquire a white fat phenotype with unilocular lipid droplets and no UCP1 expression.

brown adipocytes [27]. Hence, somite versus brown adipocyte fate determination likely occurs before the expression of *MyoD*. Readers can find detailed information regarding the regulatory circuits of brown adipose cell fate determination in recent reviews [5,28]. Of note, genetic loss of PRDM16 (PR domain-containing protein 16) or *Myf5*-positive precursor-specific deletion of EHMT1 (histone *N*-methyltransferase), a key enzymatic coregulator of PRDM16, halts brown adipocyte differentiation and promotes ectopic activation of the muscle-selective gene program [25,29], whereas mature adipocyte-specific deletion of PRDM16 [by adiponectin (*Adipoq*)-*cre*] does not affect BAT development [30]. These results indicate that the fate commitment to brown adipocytes versus somites completes during the precursor stage and that this process seems to be irreversible after the commitment phase *in vivo*.

By contrast, beige adipocytes emerge in WAT depots of adults although the developmental origin and cellular heterogeneity of WAT appear to be more multivariable than those of brown adipocytes (Figure 2, bottom panel). Earlier studies demonstrated that UCP1 expression in BAT (i.e., brown adipocytes) and in retroperitoneal WAT (i.e., beige adipocytes) was differentially regulated, and thus the developmental mechanisms for beige adipocyte biogenesis are distinct from those of brown adipocytes [31]. To support this notion, lineage-tracing studies demonstrated that beige adipocytes are derived from progenitors expressing *Sma*, *Myh11*, *Pdgfra*, or *Pdgfrb* in mice [32–35]. Intriguingly, some beige adipocytes, such as those residing in the anterior-subcutaneous, retroperitoneal, and posterior-subcutaneous WAT, are derived from progenitors expressing *Pax3* and/or *Myf5* [27]. Furthermore, roscovitine, a pharmacological inhibitor of CDK5, promotes the development of UCP1-positive adipocytes that display a distinct molecular signature from conventional beige adipocytes [36]. Hence, it is conceivable that beige adipocytes are heterogeneous in some WAT depots, and that multiple subtypes of beige adipocytes emerge depending on the nature of external stimuli. Notably, clonal analyses of adipogenic precursor cells demonstrate that beige fat precursors and white fat precursors are already discrete, with distinctive molecular profiles in mice [12] and adult humans [15,37], although only a few molecular markers are commonly enriched in mouse and human precursors. Future studies will determine the molecular basis of adipose cell heterogeneity that may shed light on the functionally distinct subtypes of adipocytes in mice and humans.

Cellular Maintenance of Beige Adipocytes

A notable feature of beige adipocytes is their inducible and reversible thermogenic capacity in response to environmental stimuli. In response to chronic cold exposure, beige adipocyte differentiation is stimulated primarily from *de novo* differentiation of precursor cells [34,38]. It is worth noting, however, that several studies have proposed the possibility of transdifferentiation from differentiated white adipocytes into beige adipocytes: in addition to careful morphological studies [39,40], a lineage-tracing study using *Adipoq-cre*^{ERT2} demonstrated that most of the newly recruited beige adipocytes in the inguinal WAT were derived from unilocular adipocytes [41]. This view still requires cautious assessment because of the current technical limitations, including the facts that no specific marker for differentiated white adipocytes is available (note that adiponectin is expressed in differentiated brown, beige, and white adipocytes) and that tamoxifen (the activator of Cre^{ERT2}) persists within the adipose tissue even following a prolonged washout period [42].

Regardless of the developmental origin of newly formed beige adipocytes, the cold-induced beige adipocytes are gradually replaced by UCP1-negative adipocytes with unilocular lipid droplets (i.e., white adipocytes) when cold-acclimated mice are returned to room temperature or thermoneutrality [43]. Recent studies demonstrated that cold-induced UCP1-positive beige adipocytes directly revert to unilocular white adipocytes within approximately 2 weeks following

re-warming or withdrawal of the β 3-AR agonist [44,45]. Furthermore, isolated beige adipocytes under culture directly acquire a white fat phenotype (i.e., unilocular lipid droplets and loss of UCP1 expression) within 10 days following withdrawal of β 3-AR agonist, thus bypassing an intermediate precursor stage [45]. By contrast, classical brown adipocytes retain their multilocular lipid morphology for up to 10 days under the same culture condition [45]. Intriguingly, beige adipocytes in the inguinal WAT of obese mice acquired a white fat state much faster than in lean mice, while brown adipocytes retained high UCP1 expression in both obese and lean mice. These results indicate that the beige adipocyte state is distinctly transient, and that there is a cell-intrinsic difference between beige adipocytes and brown adipocytes in maintaining their multilocular morphology in the absence of external stimuli. The distinct maintenance mechanism between brown and beige adipocytes may be attributed, in part, to the fact that mitochondrial biogenesis is constitutively active in brown adipocytes, whereas mitochondrial clearance plays a dominant role in beige fat maintenance because mitochondrial biogenesis in beige fat is quickly inactivated to a basal level following the withdrawal of external stimuli.

Mechanistically, the beige-to-white adipocyte conversion is tightly coupled to a striking decrease in mitochondrial content and increased mitophagy – a selective form of autophagy for mitochondrial degradation. We reported that blockade of the autophagy pathway, by UCP1⁺ adipocyte-specific deletion of *Atg5* or *Atg12*, prevents the beige-to-white adipocyte conversion even after the withdrawal of external stimuli. Importantly, prolonged retention of thermogenic beige adipocytes by the blockade of autophagy maintains high whole-body energy expenditure and protects mice from diet-induced obesity [45]. These observations are intriguing not only because autophagy is dysregulated in adipose tissues of obese and type 2 diabetes patients [46–50] but beige-to-white adipocyte conversion is also accelerated under an obese state [45]. Accordingly, prolonged retention of beige adipocytes could be an effective strategy, particularly when combined with the browning agents, to maintain energy expenditure in obese and diabetic populations.

How is mitochondrial clearance by mitophagy initiated during the beige-to-white adipocyte conversion? It has been well known that ‘damaged’ mitochondria, in other words a reduction in the membrane potential, triggers mitophagy [51,52]. However, it remains poorly understood how mitochondrial homeostasis in thermogenic adipocytes is regulated, given the fact that mitochondria in thermogenic adipocytes are uncoupled by UCP1 when activated. We recently found that mitophagy in beige adipocytes is regulated by β 3-adrenoceptor (β 3-AR) signaling at the level of parkin protein recruitment to the mitochondria, while UCP1-mediated proton uncoupling is dispensable for mitophagy activation and beige fat maintenance X. Lu *et al.*, unpublished data). Specifically, parkin protein recruitment to the mitochondria is highly repressed by β 3-AR-induced PKA signaling pathway that is independent of UCP1, while withdrawal of β 3-AR stimuli triggers parkin recruitment to the mitochondria and mitophagy. In turn, genetic deletion of *Parkin* potently prevents mitochondrial degradation in beige fat, thereby leading to prolonged retention of thermogenic beige adipocytes even after the withdrawal of external stimuli. The molecular basis of cell type-specific mitochondrial homeostasis is an intriguing question that remains unexplored; novel methodologies to accurately monitor mitochondrial biogenesis and clearance *in vivo* would provide new insights into cell type-specific regulation in physiology and disease.

Non-Canonical (UCP1-Independent) Mechanisms in Thermogenic Fat

UCP1 dissipates energy in the form of heat by uncoupling the mitochondrial proton gradient from mitochondrial ATP synthesis. UCP1 has been considered to be the only thermogenic protein (often referred to as the ‘thermogenin’) that is responsible for non-shivering adipose

thermogenesis [53,54]. Thus, the prevailing consensus has been that the action of UCP1 primarily mediates the 'anti-obesity' and 'anti-diabetic' actions of brown and beige fat. However, genetic studies in rodent models suggest an unexpected incongruity in the metabolic phenotypes between brown/beige fat-deficient mice and UCP1-deficient mice. For example, BAT-deficient mice, caused by the transgenic expression diphtheria toxin (DTA) by the *Ucp1* gene enhancer/promoter, exhibit obese and diabetic phenotypes under ambient temperature conditions [55]. Similarly, beige fat-deficient mice, caused by the adipocyte-specific deletion of PRDM16 or EHMT1, develop obesity and systemic insulin resistance even under ambient temperature [29,30]. By contrast, *Ucp1*^{-/-} mice are not diabetic and display an obese phenotype only when mice are kept under thermoneutrality [56,57]. This apparent contradiction in the metabolic phenotypes between these mouse models implies the existence of UCP1-independent mechanisms by which brown and/or beige fat contribute to the regulation of whole-body energy homeostasis.

In fact, it has been reported that the inguinal WAT of cold-acclimated *Ucp1*^{-/-} mice exhibited higher respiration than either wild-type or *Ucp1*^{-/-} mice under thermoneutrality [58]. In addition, chronic treatment with β 3-AR agonist increases respiration of epididymal WAT of *Ucp1*^{-/-} mice [59]. Furthermore, a creatine-driven substrate cycle controls both brown and beige fat thermogenesis [60–62]. Our recent study identified a distinct UCP1-independent thermogenic mechanism in beige adipocytes that involves ATP-dependent Ca^{2+} cycling by sarco/endoplasmic reticulum Ca^{2+} -ATPase 2b (SERCA2b) and ryanodine receptor 2 (RyR2) [63]. Of note, this Ca^{2+} cycling mechanism is required for beige adipocyte thermogenesis, whereas it is dispensable in brown adipocyte thermogenesis – but why is this ATP-dependent Ca^{2+} cycling mechanism selective to beige fat? It is likely because beige adipocytes have a high capacity to generate ATP via enhanced glycolysis and tricarboxylic acid (TCA) metabolism, and thus ATP-dependent thermogenesis by SERCA2b remains active in the absence of UCP1. By contrast, brown adipocytes possess a low capacity of ATP synthesis owing to the very low expression of ATP synthase [64]; therefore, ATP-dependent Ca^{2+} cycling thermogenesis cannot compensate for UCP1 loss *in vivo*.

Our study also demonstrates that UCP1-independent mechanism in beige fat greatly contributes to the regulation of whole-body energy metabolism and glucose homeostasis (summarized in Figure 3). Mice with increased beige fat mass induced by fat-specific expression of PRDM16 gain significantly less body weight and adiposity than the littermate control mice under a high-fat diet [65]. Surprisingly, even when *Prdm16* transgenic (*Prdm16* Tg) mice were crossed into the *Ucp1*^{-/-} background (*Prdm16* Tg \times *Ucp1*^{-/-} mice), these mice still possessed abundant adipocytes with multilocular lipid droplets, and displayed higher whole-body energy expenditure relative to littermate *Ucp1*^{-/-} mice. Importantly, *Prdm16* Tg \times *Ucp1*^{-/-} mice were protected from diet-induced weight gain [63]. Furthermore, both *Prdm16* Tg mice and *Prdm16* Tg \times *Ucp1*^{-/-} mice displayed a marked increase in glucose tolerance and insulin sensitivity relative to their respective littermate control mice under a high-fat diet. These studies suggest that the anti-obesity and anti-diabetic actions of beige fat are independent of UCP1.

The discovery of UCP1-independent thermogenic mechanisms may offer new opportunities for improving metabolic health, particularly in groups such as elderly populations who do not possess UCP1-positive adipocytes. Through SERCA2–RyR2 signaling, one could potentially pharmacologically activate this non-canonical thermogenesis by enhancing Ca^{2+} cycling. Indeed, S107, a pharmacological stabilizer of RyR2, which prevents Ca^{2+} leak and enhances Ca^{2+} loading in the SR/ER [66], activates UCP1-independent thermogenesis and protects *Ucp1*^{-/-} mice from cold-induced hypothermia [63]. Increased Ca^{2+} flux, by inhibiting KCNK3-

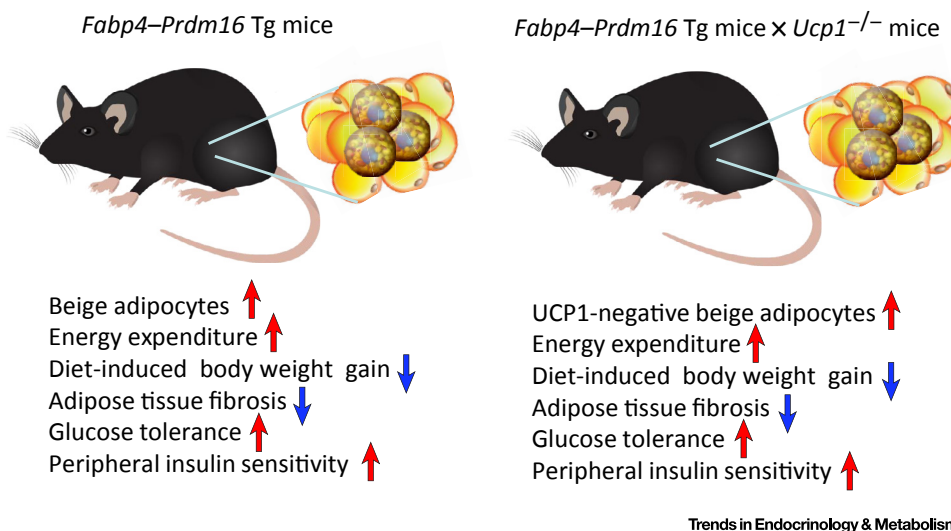


Figure 3. The Anti-Obesity and Anti-Diabetic Actions of Beige Fat Are UCP1-Independent. Adipose tissue-selective PRDM16 transgenic (*Prdm16* Tg) mice are protected from diet-induced obesity and glucose intolerance (see phenotypes on the right). When crossed into the *Ucp1*^{-/-} background, many of the metabolic phenotypes in the wild-type background are preserved in *Prdm16* Tg × *Ucp1*^{-/-} mice [63].

mediated K⁺ current in BAT, is also known to enhance intracellular cAMP signaling and subsequent thermogenesis, thereby protecting mice from diet-induced obesity [67]. In turn, dysregulation of Ca²⁺ homeostasis has been reported in liver and pancreas under pathological conditions such as obesity and diabetes [68–73]. Hence, enhanced Ca²⁺ cycling by S107 treatment potently restores glucose-stimulated Ca²⁺ flux and insulin secretion in the pancreas [74]. A concern regarding the pharmacological activation of Ca²⁺ cycling regards the potentially harmful effects on the cardiovascular system of dysregulated Ca²⁺ cycling. In fact, *RYR2* gene mutations cause catecholaminergic polymorphic ventricular tachycardia (CPVT) and arrhythmogenic right ventricular cardiomyopathy type 2 (ARVD2) [75,76]. Developing new technologies to manipulate Ca²⁺ cycling in an adipose tissue-selective fashion may circumvent the potential detrimental effects on the cardiovascular system.

Concluding Remarks and Future Perspectives

Despite the morphological and biochemical similarities between brown fat and beige fat, recent studies have identified distinct characteristics in the developmental regulation and function of the two cell types (summarized in Table 1). It is important to note that UCP1 still is a central regulator of BAT thermogenesis, as demonstrated by several studies in the past. Nevertheless, emerging evidence suggests that alternative thermogenic pathways are present in beige fat, and that these contribute to the regulation of systemic energy expenditure and glucose homeostasis. It remains unknown, however, how the multiple thermogenic mechanisms are coordinately regulated to regulate systemic energy homeostasis *in vivo*. It is now crucial to determine the relative contribution of canonical (UCP1) and non-canonical (UCP1-independent) adipose thermogenesis to whole-body energy homeostasis. Further, the extent to which the two independent ATP-dependent thermogenic mechanisms, creatine cycling and Ca²⁺ cycling, converge to control non-canonical thermogenesis should be critically evaluated.

It is worth noting that Ca²⁺ cycling thermogenesis is an evolutionarily conserved mechanism that is present in both adult humans and mice, and even in pigs – an unusual mammalian


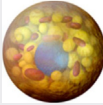
Outstanding Questions

What are the relative contributions of canonical (UCP1) thermogenesis and non-canonical thermogenesis in the regulation of systemic energy homeostasis? Thermoregulation is a fundamental homeostatic system in endothermic animals, even in pigs and whales that lack a functional UCP1 protein. How are the multiple thermogenic mechanisms coordinately regulated to control core-body and peripheral tissue temperature in physiology and disease?

Does non-canonical thermogenesis play any role in systemic and local thermoregulation (e.g., fever, hyperthermia) and age-related disorders? Thermogenic fat has been known to regulate core body temperature in response to fever and cancer-related hyperthermia. Furthermore, the prevalence of thermogenic fat is highly age-dependent. Do non-canonical thermogenic mechanisms play any role in fever and other temperature-related diseases?

How many types of adipocytes do humans and mice have? So far, two distinct types of thermogenic adipocytes (brown and beige adipocytes) have been described in mammals. Given the heterogeneity in adipose tissues, it is likely that more than two forms of thermogenic fat exist.

Table 1. Biochemical and Functional Characteristics of Thermogenic Fat

	Brown adipocyte	Beige adipocyte
		
	UCP1⁺ Multilocular lipids Enriched mitochondria	
Location	<ul style="list-style-type: none"> Dedicated depots (infants) Relatively homogeneous 	<ul style="list-style-type: none"> Adults (mice and humans) Highly heterogeneous
Lineage	<ul style="list-style-type: none"> Myogenic lineage (<i>Eng⁺, Myf5⁺, Pax7⁺</i>) 	<ul style="list-style-type: none"> Multiple lineages (<i>SMA⁺, PDGFRa⁺, PDGFRb⁺</i>)
Enriched markers	<i>Ucp1, Cidea, Pgc1a, Cox7a, Prdm16, Zic1</i>	<i>Ucp1, Cidea, Pgc1a, Cox7a, Prdm16, Cited1, Cd137, Tmem26, Tbx1, Eps11</i>
Maintenance	<ul style="list-style-type: none"> Constitutive 	<ul style="list-style-type: none"> Transient (direct transition)
Thermogenic mechanisms	UCP1-dependent creatine cycling	UCP1-independent (Ca ²⁺ cycling, creatine cycling)

species that harbors mutations in the *UCP1* gene and lacks a functional UCP1 protein [63]. Curiously, genome analyses of whales, including minke, fin, bowhead, and sperm whales, found that whales also lack functional UCP1 proteins [77], although the role of Ca²⁺ cycling thermogenesis in whales is unknown. Tangentially, Ca²⁺ cycling by SERCA1 is known to control thermogenesis in the 'heat-organ' of endothermic fish species, such as swordfish and blue marlin [78]. Because thermogenesis is a fundamental homeostatic system to all the endothermic animals, a better understanding of divergent evolution in non-model organisms would provide new insights into UCP1-independent thermogenic mechanisms.

The therapeutic potential of non-canonical thermogenesis by Ca²⁺ and creatine cycling in metabolic diseases is compelling owing to the presence of these mechanisms in adult humans. Of note, FGF21 increases intracellular Ca²⁺ levels in adipocytes [79] and induces browning in a cell-autonomous fashion [80] – even though recent studies have reported that the pharmacological action of FGF21 on body weight and glucose metabolism is UCP1-independent [81,82], and that neither FGF21 nor UCP1 is required for cold adaptation in mice [83]. It is conceivable that some of FGF21 actions to increase whole-body energy metabolism may be mediated through activation of UCP1-independent thermogenesis in adipose tissue. Adipose tissue-selective activation of non-canonical thermogenesis (e.g., by enhancing SERCA2b function), if successfully developed, would open up new therapeutic potential to improve metabolic health even in populations who lack UCP1-positive adipocytes.

The role of BAT as a thermogenic organ has been well-established. Nonetheless, the biological roles of beige fat are likely to extend beyond thermogenesis [4]. As an example, we recently demonstrated that beige adipocyte biogenesis is inversely correlated with the development of adipose tissue fibrosis in subcutaneous WAT. Chronic cold acclimation or PRDM16 expression in the adipose tissue potently prevents the development of adipose tissue fibrosis even in *Ucp1*^{-/-} mice, and the repressive effect is independent of energy expenditure and body weight [84]. Importantly, repression of adipose tissue fibrosis by an UCP1-independent mechanism leads to a significant improvement in systemic glucose homeostasis and insulin-sensitivity in WAT [84]. As another non-thermogenic role of brown/beige fat, several 'batokines' are known to control systemic glucose homeostasis [85–87]. Accordingly, it will be increasingly important

to better understand the non-thermogenic roles of brown/beige fat in the regulation of whole-body energy metabolism and glucose/lipid homeostasis (see Outstanding Questions).

Acknowledgments

We apologize for being unable to cite many papers that have contributed to the progress of this field owing to space limitations. This work was supported by grants from the National Institutes of Health (DK97441 and DK108822) and the Edward Mallinckrodt, Jr Foundation to S.K. K.I. is supported by the Manpei Suzuki Diabetes Foundation.

References

- Cinti, S. (1999) *The Adipose Organ*, Editrice Kurtis
- Young, P. *et al.* (1984) Brown adipose tissue in the parametrial fat pad of the mouse. *FEBS Lett.* 167, 10–14
- Loncar, D. *et al.* (1988) Epididymal white adipose tissue after cold stress in rats. I. Nonmitochondrial changes. *J. Ultrastruct. Mol. Struct. Res.* 101, 109–122
- Kajimura, S. *et al.* (2015) Brown and beige fat: physiological roles beyond heat generation. *Cell Metab.* 22, 546–559
- Harms, M. and Seale, P. (2013) Brown and beige fat: development, function and therapeutic potential. *Nat. Med.* 19, 1252–1263
- van Marken Lichtenbelt, W.D. *et al.* (2009) Cold-activated brown adipose tissue in healthy men. *N. Engl. J. Med.* 360, 1500–1508
- Saito, M. *et al.* (2009) High incidence of metabolically active brown adipose tissue in healthy adult humans: effects of cold exposure and adiposity. *Diabetes* 58, 1526–1531
- Cypess, A.M. *et al.* (2009) Identification and importance of brown adipose tissue in adult humans. *N. Engl. J. Med.* 360, 1509–1517
- Virtanen, K.A. *et al.* (2009) Functional brown adipose tissue in healthy adults. *N. Engl. J. Med.* 360, 1518–1525
- Nedergaard, J. *et al.* (2007) Unexpected evidence for active brown adipose tissue in adult humans. *Am. J. Physiol. Endocrinol. Metab.* 293, E444–E452
- Lidell, M.E. *et al.* (2013) Evidence for two types of brown adipose tissue in humans. *Nat. Med.* 19, 631–634
- Wu, J. *et al.* (2012) Beige adipocytes are a distinct type of thermogenic fat cell in mouse and human. *Cell* 150, 366–376
- Sharp, L.Z. *et al.* (2012) Human BAT possesses molecular signatures that resemble beige/brite cells. *PLoS One* 7, e49452
- Cypess, A.M. *et al.* (2013) Anatomical localization, gene expression profiling and functional characterization of adult human neck brown fat. *Nat. Med.* 19, 635–639
- Shinoda, K. *et al.* (2015) Genetic and functional characterization of clonally derived adult human brown adipocytes. *Nat. Med.* 21, 389–394
- Yoneshiro, T. *et al.* (2013) Recruited brown adipose tissue as an antiobesity agent in humans. *J. Clin. Invest.* 123, 3404–3408
- van der Lans, A.A. *et al.* (2013) Cold acclimation recruits human brown fat and increases nonshivering thermogenesis. *J. Clin. Invest.* 123, 3395–3403
- Lee, P. *et al.* (2014) Temperature-acclimated brown adipose tissue modulates insulin sensitivity in humans. *Diabetes* 63, 3686–3698
- Hanssen, M.J. *et al.* (2015) Short-term cold acclimation improves insulin sensitivity in patients with type 2 diabetes mellitus. *Nat. Med.* 21, 863–865
- Leitner, B.P. *et al.* (2017) Mapping of human brown adipose tissue in lean and obese young men. *Proc. Natl. Acad. Sci. U. S. A.* 114, 8649–8654
- Sidossis, L. and Kajimura, S. (2015) Brown and beige fat in humans: thermogenic adipocytes that control energy and glucose homeostasis. *J. Clin. Invest.* 125, 478–486
- Atit, R. *et al.* (2006) Beta-catenin activation is necessary and sufficient to specify the dorsal dermal fate in the mouse. *Dev. Biol.* 296, 164–176
- Lepper, C. and Fan, C.M. (2010) Inducible lineage tracing of Pax7-descendant cells reveals embryonic origin of adult satellite cells. *Genesis* 48, 424–436
- Sanchez-Gurmaches, J. *et al.* (2012) PTEN loss in the Myf5 lineage redistributes body fat and reveals subsets of white adipocytes that arise from Myf5 precursors. *Cell Metab.* 16, 348–362
- Seale, P. *et al.* (2008) PRDM16 controls a brown fat/skeletal muscle switch. *Nature* 454, 961–967
- Wang, W. *et al.* (2014) Ebf2 is a selective marker of brown and beige adipogenic precursor cells. *Proc. Natl. Acad. Sci. U. S. A.* 111, 14466–14471
- Sanchez-Gurmaches, J. and Guertin, D.A. (2014) Adipocytes arise from multiple lineages that are heterogeneously and dynamically distributed. *Nat. Commun.* 5, 4099
- Inagaki, T. *et al.* (2016) Transcriptional and epigenetic control of brown and beige adipose cell fate and function. *Nat. Rev. Mol. Cell Biol.* 17, 480–495
- Ohno, H. *et al.* (2013) EHMT1 controls brown adipose cell fate and thermogenesis through the PRDM16 complex. *Nature* 504, 163–167
- Cohen, P. *et al.* (2014) Ablation of PRDM16 and beige adipose causes metabolic dysfunction and a subcutaneous to visceral fat switch. *Cell* 156, 304–316
- Xue, B. *et al.* (2007) Genetic variability affects the development of brown adipocytes in white fat but not in interscapular brown fat. *J. Lipid Res.* 48, 41–51
- Long, J.Z. *et al.* (2014) A smooth muscle-like origin for beige adipocytes. *Cell Metab.* 19, 810–820
- Vishvanath, L. *et al.* (2016) Pdgfrbeta⁺ mural preadipocytes contribute to adipocyte hyperplasia induced by high-fat-diet feeding and prolonged cold exposure in adult mice. *Cell Metab.* 23, 350–359
- Berry, D.C. *et al.* (2016) Mouse strains to study cold-inducible beige progenitors and beige adipocyte formation and function. *Nat Commun.* 7, 10184
- Lee, Y.H. *et al.* (2012) In vivo identification of bipotential adipocyte progenitors recruited by beta3-adrenoceptor activation and high-fat feeding. *Cell Metab.* 15, 480–491
- Wang, H. *et al.* (2016) Browning of white adipose tissue with roscovitine induces a distinct population of UCP1⁺ adipocytes. *Cell Metab.* 24, 835–847
- Xue, R. *et al.* (2015) Clonal analyses and gene profiling identify genetic biomarkers of the thermogenic potential of human brown and white preadipocytes. *Nat. Med.* 21, 760–768
- Wang, Q.A. *et al.* (2013) Tracking adipogenesis during white adipose tissue development, expansion and regeneration. *Nat. Med.* 19, 1338–1344
- Barbatelli, G. *et al.* (2010) The emergence of cold-induced brown adipocytes in mouse white fat depots is determined predominantly by white to brown adipocyte transdifferentiation. *Am. J. Physiol. Endocrinol. Metab.* 298, E1244–E1253
- Cinti, S. (2009) Transdifferentiation properties of adipocytes in the adipose organ. *Am. J. Physiol. Endocrinol. Metab.* 297, E977–E986
- Lee, Y.H. *et al.* (2015) Cellular origins of cold-induced brown adipocytes in adult mice. *FASEB J.* 29, 286–299

42. Ye, R. *et al.* (2015) Impact of tamoxifen on adipocyte lineage tracing: inducer of adipogenesis and prolonged nuclear translocation of Cre recombinase. *Mol. Metab.* 4, 771–778
43. Loncar, D. (1991) Convertible adipose tissue in mice. *Cell Tissue Res.* 266, 149–161
44. Rosenwald, M. *et al.* (2013) Bi-directional interconversion of brite and white adipocytes. *Nat. Cell Biol.* 15, 659–667
45. Altshuler-Keylin, S. *et al.* (2016) Beige adipocyte maintenance is regulated by autophagy-induced mitochondrial clearance. *Cell Metab.* 24, 402–419
46. Kovsky, J. *et al.* (2011) Altered autophagy in human adipose tissues in obesity. *J. Clin. Endocrinol. Metab.* 96, E268–E277
47. Nunez, C.E. *et al.* (2013) Defective regulation of adipose tissue autophagy in obesity. *Int. J. Obes. (Lond.)* 37, 1473–1480
48. Jansen, H.J. *et al.* (2012) Autophagy activity is up-regulated in adipose tissue of obese individuals and modulates proinflammatory cytokine expression. *Endocrinology* 153, 5866–5874
49. Ost, A. *et al.* (2010) Attenuated mTOR signaling and enhanced autophagy in adipocytes from obese patients with type 2 diabetes. *Mol. Med.* 16, 235–246
50. Kosacka, J. *et al.* (2015) Autophagy in adipose tissue of patients with obesity and type 2 diabetes. *Mol. Cell. Endocrinol.* 409, 21–32
51. Narendra, D.P. *et al.* (2010) PINK1 is selectively stabilized on impaired mitochondria to activate Parkin. *PLoS Biol.* 8, e1000298
52. Narendra, D. *et al.* (2008) Parkin is recruited selectively to impaired mitochondria and promotes their autophagy. *J. Cell Biol.* 183, 795–803
53. Golozoubova, V. *et al.* (2001) Only UCP1 can mediate adaptive nonshivering thermogenesis in the cold. *FASEB J.* 15, 2048–2050
54. Nedergaard, J. *et al.* (2001) UCP1: the only protein able to mediate adaptive non-shivering thermogenesis and metabolic inefficiency. *Biochim. Biophys. Acta* 1504, 82–106
55. Lowell, B.B. *et al.* (1993) Development of obesity in transgenic mice after genetic ablation of brown adipose tissue. *Nature* 366, 740–742
56. Enerback, S. *et al.* (1997) Mice lacking mitochondrial uncoupling protein are cold-sensitive but not obese. *Nature* 387, 90–94
57. Feldmann, H.M. *et al.* (2009) UCP1 ablation induces obesity and abolishes diet-induced thermogenesis in mice exempt from thermal stress by living at thermoneutrality. *Cell Metab.* 9, 203–209
58. Ukropec, J. *et al.* (2006) UCP1-independent thermogenesis in white adipose tissue of cold-acclimated Ucp1^{-/-} mice. *J. Biol. Chem.* 281, 31894–31908
59. Granneman, J.G. *et al.* (2003) White adipose tissue contributes to UCP1-independent thermogenesis. *Am. J. Physiol. Endocrinol. Metab.* 285, E1230–E1236
60. Kazak, L. *et al.* (2015) A creatine-driven substrate cycle enhances energy expenditure and thermogenesis in beige fat. *Cell* 163, 643–655
61. Kazak, L. *et al.* (2017) Genetic depletion of adipocyte creatine metabolism inhibits diet-induced thermogenesis and drives obesity. *Cell Metab.* 26, 660–671
62. Bertholet, A.M. *et al.* (2017) Mitochondrial patch clamp of beige adipocytes reveals UCP1-positive and UCP1-negative cells both exhibiting futile creatine cycling. *Cell Metab.* 25, 811–822
63. Ikeda, K. *et al.* (2017) UCP1-independent signaling involving SERCA2b-mediated calcium cycling regulates beige fat thermogenesis and systemic glucose homeostasis. *Nat. Med.* 23, 1454–1465
64. Kramarova, T.V. *et al.* (2008) Mitochondrial ATP synthase levels in brown adipose tissue are governed by the c-Fo subunit P1 isoform. *FASEB J.* 22, 55–63
65. Seale, P. *et al.* (2011) Prdm16 determines the thermogenic program of subcutaneous white adipose tissue in mice. *J. Clin. Invest.* 121, 96–105
66. Andersson, D.C. and Marks, A.R. (2010) Fixing ryanodine receptor Ca leak – a novel therapeutic strategy for contractile failure in heart and skeletal muscle. *Drug Discov. Today Dis. Mech.* 7, e151–e157
67. Chen, Y. *et al.* (2017) Crosstalk between KCNK3-mediated ion current and adrenergic signaling regulates adipose thermogenesis and obesity. *Cell* 171, 836–848
68. Ravier, M.A. *et al.* (2011) Mechanisms of control of the free Ca²⁺ concentration in the endoplasmic reticulum of mouse pancreatic beta-cells: interplay with cell metabolism and [Ca²⁺]_i and role of SERCA2b and SERCA3. *Diabetes* 60, 2533–2545
69. Luciani, D.S. *et al.* (2009) Roles of IP3R and RyR Ca²⁺ channels in endoplasmic reticulum stress and beta-cell death. *Diabetes* 58, 422–432
70. Park, S.W. *et al.* (2010) Sarco(endo)plasmic reticulum Ca²⁺-ATPase 2b is a major regulator of endoplasmic reticulum stress and glucose homeostasis in obesity. *Proc. Natl. Acad. Sci. U. S. A.* 107, 19320–19325
71. Tong, X. *et al.* (2016) SERCA2 deficiency impairs pancreatic beta-cell function in response to diet-induced obesity. *Diabetes* 65, 3039–3052
72. Fu, S. *et al.* (2011) Aberrant lipid metabolism disrupts calcium homeostasis causing liver endoplasmic reticulum stress in obesity. *Nature* 473, 528–531
73. Kono, T. *et al.* (2012) PPAR-gamma activation restores pancreatic islet SERCA2 levels and prevents beta-cell dysfunction under conditions of hyperglycemic and cytokine stress. *Mol. Endocrinol.* 26, 257–271
74. Santulli, G. *et al.* (2015) Calcium release channel RyR2 regulates insulin release and glucose homeostasis. *J. Clin. Invest.* 125, 1968–1978
75. Tiso, N. *et al.* (2001) Identification of mutations in the cardiac ryanodine receptor gene in families affected with arrhythmogenic right ventricular cardiomyopathy type 2 (ARVD2). *Hum. Mol. Genet.* 10, 189–194
76. Marks, A.R. *et al.* (2002) Involvement of the cardiac ryanodine receptor/calcium release channel in catecholaminergic polymorphic ventricular tachycardia. *J. Cell Physiol.* 190, 1–6
77. Keane, M. *et al.* (2015) Insights into the evolution of longevity from the bowhead whale genome. *Cell Rep.* 10, 112–122
78. Block, B.A. (1994) Thermogenesis in muscle. *Annu. Rev. Physiol.* 56, 535–577
79. Moyers, J.S. *et al.* (2007) Molecular determinants of FGF-21 activity-synergy and cross-talk with PPARgamma signaling. *J. Cell Physiol.* 210, 1–6
80. Fisher, F.M. *et al.* (2012) FGF21 regulates PGC-1alpha and browning of white adipose tissues in adaptive thermogenesis. *Genes Dev.* 26, 271–281
81. Veniant, M.M. *et al.* (2015) Pharmacologic effects of FGF21 are independent of the 'browning' of white adipose tissue. *Cell Metab.* 21, 731–738
82. Samms, R.J. *et al.* (2015) Discrete aspects of FGF21 in vivo pharmacology do not require UCP1. *Cell Rep.* 11, 991–999
83. Keipert, S. *et al.* (2017) Long-term cold adaptation does not require FGF21 or UCP1. *Cell Metab.* 26, 437–446
84. Hasegawa, Y. *et al.* (2018) Repression of adipose tissue fibrosis through a PRDM16–GTF2IRD1 complex improves systemic glucose homeostasis. *Cell Metab.* 27, 180–194
85. Svensson, K.J. *et al.* (2016) A secreted Slit2 fragment regulates adipose tissue thermogenesis and metabolic function. *Cell Metab.* 23, 454–466
86. Long, J.Z. *et al.* (2016) The secreted enzyme PM20D1 regulates lipidated amino acid uncouplers of mitochondria. *Cell* 166, 424–435
87. Wang, G.X. *et al.* (2014) The brown fat-enriched secreted factor Nrg4 preserves metabolic homeostasis through attenuation of hepatic lipogenesis. *Nat. Med.* 20, 1436–1443